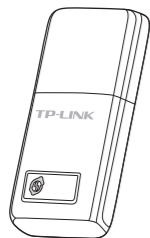


Quick Installation Guide



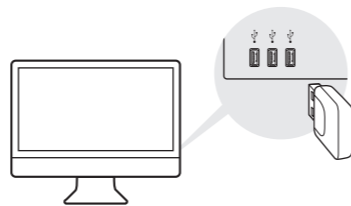
300Mbps Mini Wireless N USB Adapter
MODEL NO. TL-WN823N
7106506493 REV5.0.0



For Mac OS X

1 Connect to a Computer

Insert the adapter into a USB port on your computer directly.



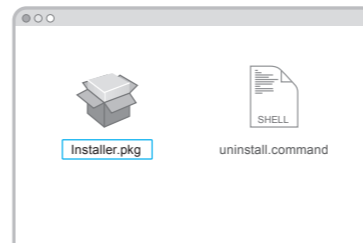
2 Install Driver and Utility

a. Insert the CD.

Note: You can also download the driver and utility at <http://www.tp-link.com>.


b. Browse the CD, go to **TL-WN823N > Mac OS X Driver**, unzip the **Mac OS X version.zip** file and run the Installer.

c. Follow the wizard to complete the installation.

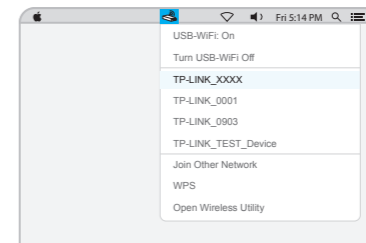


3 Join a Wireless Network

Option 1: Via TP-LINK Utility

a. Click  (TP-LINK Wireless Configuration Utility) on the menu bar.

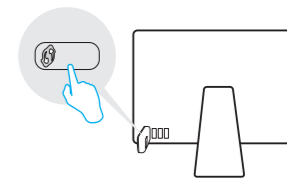
b. Select your Wi-Fi network and enter the Wi-Fi password when prompted.



Option 2: Via Wi-Fi Protected Setup (WPS)

a. Press the WPS button on your router.

b. In 2 minutes, press and hold the WPS button on the adapter until the WPS progress screen appears.

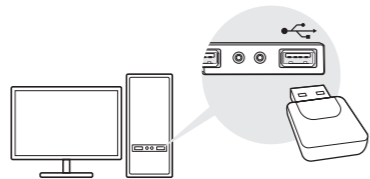


c. When you are prompted "WPS Protocol Finished", click **OK**.

For Windows

1 Connect to a Computer

Insert the adapter into a USB port on your computer directly.



Note: In Windows XP, a Found New Hardware Wizard window will appear when the adapter is detected. Please click **Cancel**.

This USB Adapter can only be powered by computers that comply with Limited Power Source (LPS).

2 Install Driver and Utility

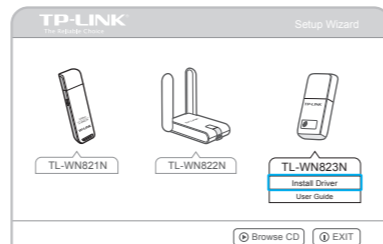
a. Insert the CD and run the **Autorun.exe** from the pop-up Autoplay window.

Notes:

1. You can also download the driver and utility at <http://www.tp-link.com>.
2. In some operating systems, the CD screen will pop up automatically. Otherwise, run the CD manually.

b. Select **TL-WN823N** and click **Install Driver**, then follow the InstallShield Wizard to complete the installation.

Note: During the installation, select **TP-LINK Wireless Configuration Utility and Driver** if you want to use TP-LINK Utility and WPS function.

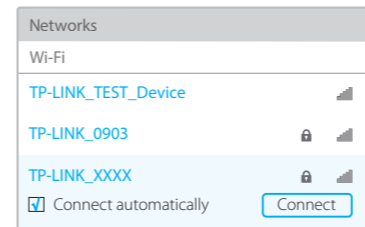


3 Join a Wireless Network

Option 1: Via Windows Wireless Utility

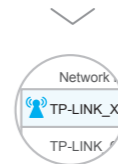
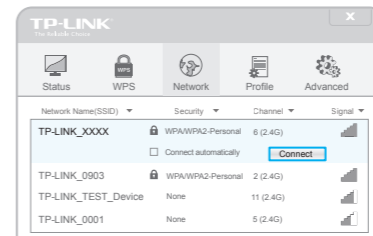
Click or (Network icon) on the task bar, select your Wi-Fi network, and click **Connect**.

Note: In Windows XP, you need to close the TP-LINK Utility before using the Windows Wireless Utility.



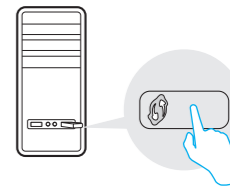
Option 2: Via TP-LINK Utility

Select your Wi-Fi network from the utility window and click **Connect**. The symbol indicates a successful connection.



Option 3: Via Wi-Fi Protected Setup (WPS)

- a. Press the WPS button on your router.
- b. In 2 minutes, press and hold the WPS button on the adapter until the configuring screen appears.



- c. When you are prompted "Successfully connected to the network by WPS!", click **OK**.



For more information, please visit our website <http://www.tp-link.com>

©2016 TP-LINK